

DS-U301

SABRENT
Connecting Differently™

USB 3.0 SATA 2.5"/3.5" SSD HDD DOCKING STATION + USB PORTS



USER MANUAL

With a Sabrent USB 3.0 SATA 2.5"/3.5" SSD/HDD Docking Station + USB Ports you can Hot-Swap 2.5"/3.5" SATA Hard Drives when connected to your Desktop or Notebook. Tool free Plug & Play installation makes for an easy setup. You can now transfer data quickly and easily through USB Type-A 3.0 at high speeds up to 5Gbps. Featuring three USB 3.0 Type-A ports you can simultaneously connect your other devices with transfer speeds of 5Gbps.

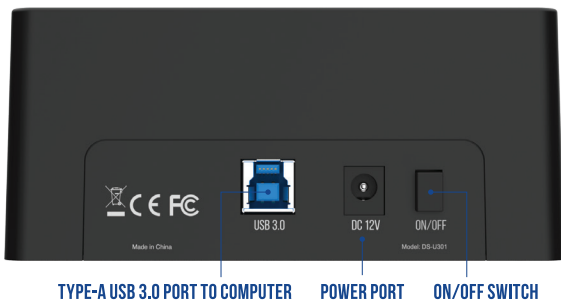
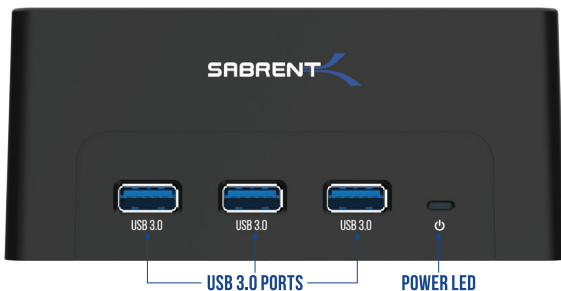
System requirements

- Windows OS
- Mac OS

Package contents

- HDD Docking Station + USB Ports
- Type-A USB cable
- Power adapter
- User Manual

PRODUCT OVERVIEW



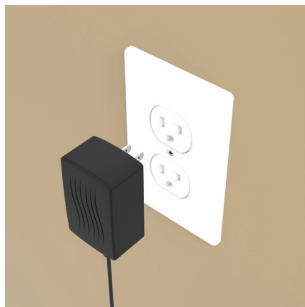
1

Connect the **Power Adapter** to the back of the dock



2

Connect the **AC Power** to a power outlet



3

Connect the **USB Cable** to the back of the dock



4

Connect the other end of the **USB Cable** to your **Computer USB Port**



5

Insert your hard into the **HDD bay**



6

Press the **Power Switch** to the **ON** position



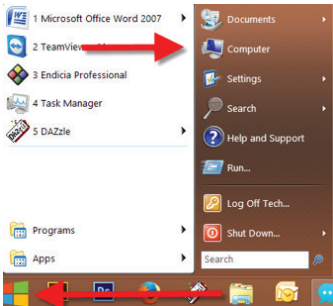
7

The **Power LED** should illuminate



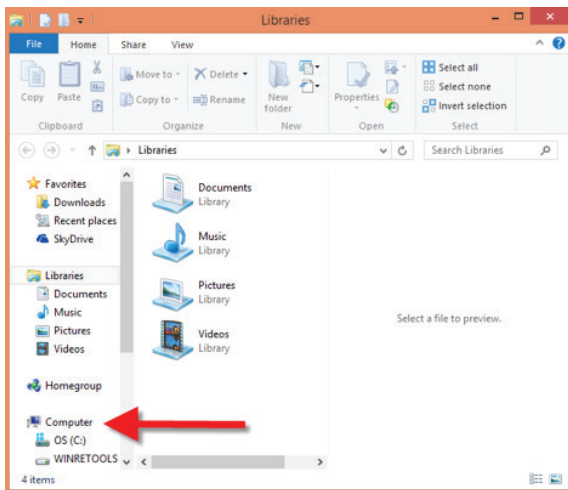
WINDOWS PC HARD DRIVE WITH DATA/FILES

Click on the **Start Icon** located on the bottom left of the screen and then click on **Computer**



Note:

You can also click on the **File Explorer Icon** and then click on **This PC** or **Computer**

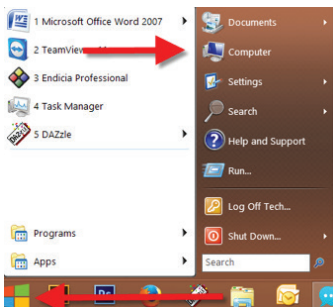


You should get a new drive letter every time you insert a hard drive with data/files

Name	Type	Total Size
OS (C:)	Local Disk	
WINRETOOLS (D:)	Local Disk	
DVD RW Drive (E:)	CD Drive	
New Volume (F:)	Local Disk	
Local Disk (G:)	Local Disk	

WINDOWS PC NEW HARD DRIVE SETUP (HARD DRIVE WITH NO DATA/FILES)

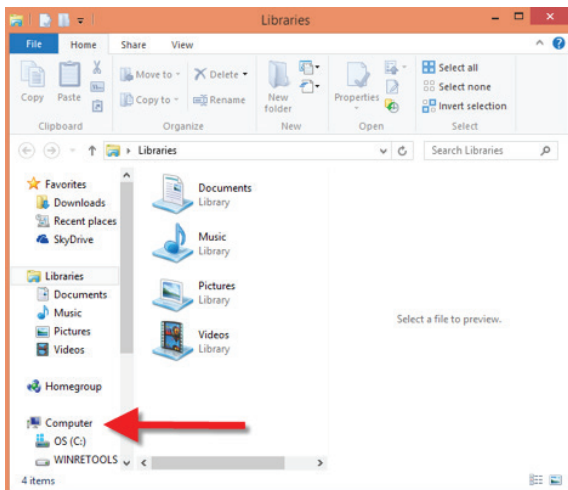
Click on the **Start Icon** located on the bottom left of the screen
and then **RIGHT** click on **Computer**



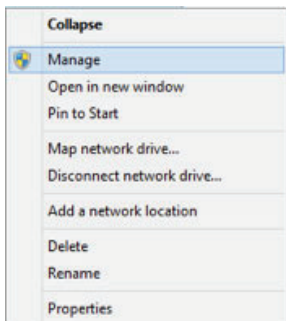
Note:

You can also click on the File Explorer icon
and then click on This PC or Computer

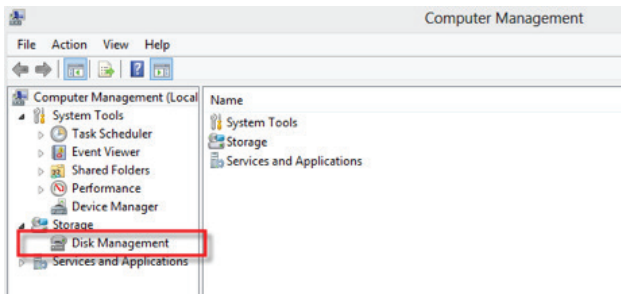




Click on **Manage**

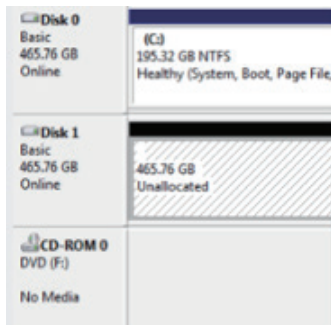


Click on **Disk Management**

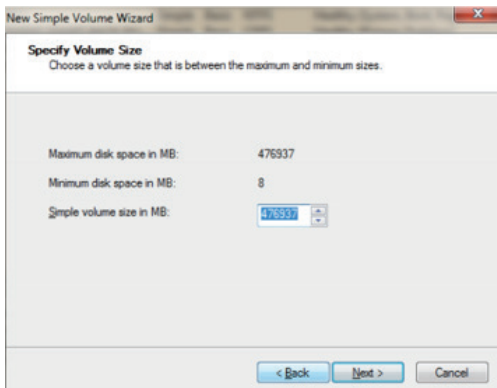


**Note: Disk 0 should be your internal hard drive
Disk 1 should be your external hard drive but SETUPS MAY DIFFER**

RIGHT click on **Unallocated** and click on **New Simple Volume**

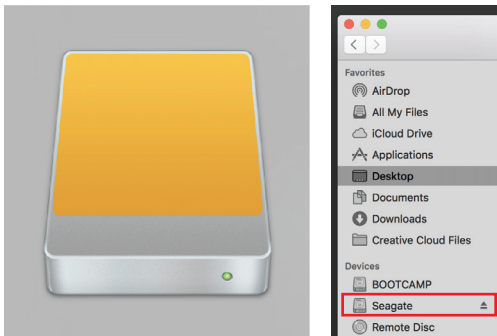


Go through the **Setup Wizard** to assign a drive letter



MAC OS HARD DRIVE WITH DATA/FILES

A new Icon should pop up on your main screen each time you insert a hard drive with DATA/Files

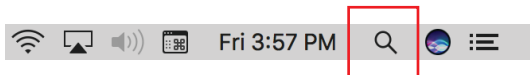


Click on the Icon to view your hard drive

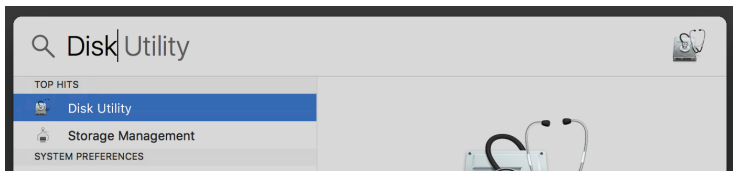
Note: You can also click on the Finder icon and select your hard drive under Devices

MAC OS NEW HARD DRIVE SETUP (HARD DRIVE WITH NO DATA/FILES)

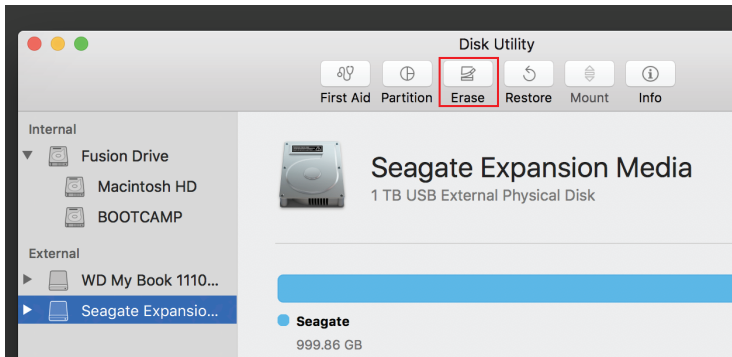
Click on the Search icon on your toolbar



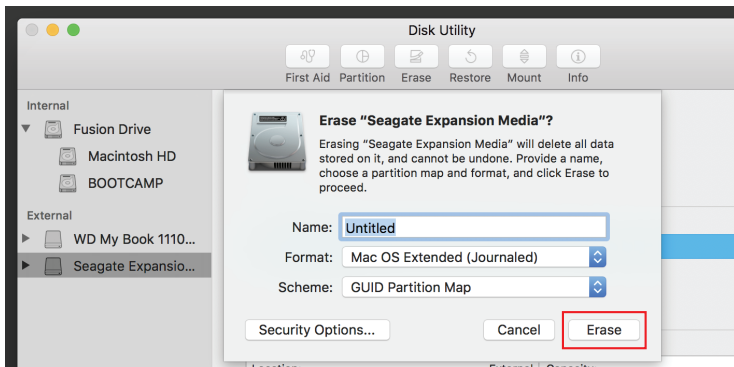
Type in Disk Utility and click on it



Click the icon for your external hard drive located in the sidebar on the left
 Click on the Erase tab at the top of the window



Select the volume format you want and give it a name



Click on erase

NOTES

This is backwards compatible on USB 2.0 and 1.1 with their transfer speeds.
Please do not remove your hard drive while hard drive is being accessed.

TROUBLESHOOTING/SUPPORT

Power LED does not come on?

- Make sure that you have a tight connection between the power adapter and dock.
- Try it on a different power outlet.

HHD LED does not come one?

- Re-seat the hard drive into the bay.
- Swap the hard drive out with a spare.

Computer does not recognize the hard drive?

- Make sure that you have a tight connection between the dock and 3.0 cable.
- Try the USB cable on a different USB port on your computer.
- New hard drives must setup, please review new hard drive setup for your OS.
- Swap the hard drive out with a spare.

Please contact our Technical Support Team if issues continue

